

# THE Kensington MAGAZINE



Photo by Justin Barton



## LEIGHTON HOUSE MUSEUM EAST MEETS WEST

Former studio-house of artist Frederic Leighton (1830 - 1896), famous for its exotic interiors and collections of fine and decorative art displayed throughout the rooms.

**Open daily from 10am - 5.30pm, closed Tuesdays**

Adults £5 and Concessions £3

**Venue Hire:** The house can be hired for a variety of social, promotional and cultural events.

**Visit Us:** 12 Holland Park Road, W14 8LZ | 020 7602 3316 | [museums@rbkc.gov.uk](mailto:museums@rbkc.gov.uk)  
[www.leightonhouse.co.uk](http://www.leightonhouse.co.uk)



### **The Fabric of Life**

Runs until 22 September

The exhibition brings together some of the most rare and beautiful Persian carpets from the Sakhai family collection displayed through the spectacular interiors of the museum.



THE ROYAL BOROUGH OF  
KENSINGTON  
AND CHELSEA

# REVIEW: CULTURAL ACTIVITIES AT LEIGHTON HOUSE THIS SUMMER

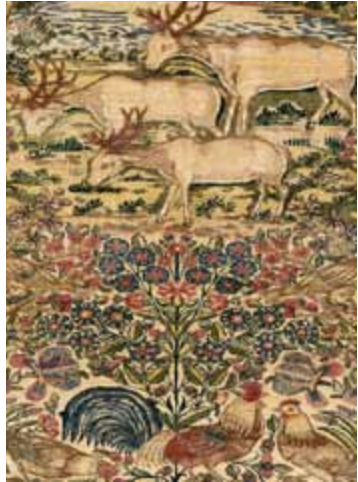
By Isere Lloyd-Davies

If you're looking for cultural activities this Summer, you can enjoy some of the exciting events taking place at Leighton House Museum, the former home of renowned Victorian draughtsman Frederic, Lord Leighton (1830-1896).

The first event is a Study Day to discover more about Leighton's drawings. The collection contains almost 700 studies, which have been conserved, catalogued and photographed with the support of the Heritage Lottery Fund. A catalogue of these images can be accessed on the Leighton House website (details below), as well as a database containing all of his drawings held in other collections worldwide. There is also a printed Drawings catalogue on sale in the museum. In addition to this and in a unique collaboration with The Kensington Magazine, residents are invited to see numerous drawings and illustrations not normally on display to the public at an exclusive viewing with the Senior Curator who will explain more about Leighton's technique (see pg 27 for booking details).

The next opportunity you must not miss is the chance to visit Leighton House Museum, 18 Stafford Terrace, 7 Hammersmith Terrace, Carlyle House and the William Morris Society at Kelmscott House. These five special houses form an exceptional group of the studios and homes of famous artists and writers, who all lived in or close to Kensington during the second part of the nineteenth century. Featuring the lives and works of Thomas Carlyle, Frederick Leighton, William Morris, Emery Walker and Edward Linley Sambourne, they give a fascinating insight into this period of history. For access information to these houses, see the 'Five Famous Victorians' visitor guide, available at Leighton House.

Finally, Leighton House is hosting a fascinating exhibition of Persian carpets from the The Sakhai Family Collection. Essie Sakhai is one of Europe's foremost experts on Persian rugs and carpets, having spent his life surrounded by rugs.



Section of a Persian Carpet designed by Essie Sakhai (kind courtesy of Essie Carpets)

He will share this passion with you through an exhibition of his colourful family collection entitled "The Fabric of Life". The exhibition is accompanied by a beautiful photographic book, available to buy in the museum shop, featuring weaving and pattern styles from various regions and tribes around Persia. Originally a journalist, Sakhai says that his love for carpets comes from the fact that each one tells a story, and in his opinion "Picking a rug is one of the most important decisions that people make about their homes." He has written numerous books on the subject and has helped to advise many museums and collectors through the years. Essie Sakhai's main shop is on Piccadilly overlooking St James's Palace.

These events at Leighton House and other venues are a tremendous opportunity to learn more about these renowned artists and would suit art lovers and anyone with an interest in social history.

[www.leightonhouse.co.uk](http://www.leightonhouse.co.uk)  
12 Holland Park Road, London W14 8LZ  
Tel: 020 7602 3316  
Email: [museums@rbkc.gov.uk](mailto:museums@rbkc.gov.uk)  
[www.essiecarpets.com](http://www.essiecarpets.com)